

# Peter Ray Homes

HOUSE & LAND LINCOLN: \$ 598,000

MONTE CRESCENT, VERDECO PARK (Lot 94)



KIWI SAVER ELIGIBLE



Turnkey from 5% Deposit

HOUSE SIZE: 180m<sup>2</sup>

SECTION SIZE: 562m<sup>2</sup>

## THIS PLAN

This 3 Bedroom home has a contemporary style. The design allows for plenty of natural light into the home. The spacious living areas flow seamlessly to the outdoor space which is great for entertaining.

The heart of the home has a well-appointed kitchen with large walk-in pantry.

This home comes with all the quality fittings that you would expect in a Peter Ray Homes Build.

MADE FOR YOU. BY US.



Ph 03 348 1994

[www.peterrayhomes.co.nz](http://www.peterrayhomes.co.nz)

Office 521 Blenheim Road, Sockburn, Christchurch

SHOWHOMES AT FARINGDON ROLLESTON, TE WHARIKI LINCOLN & PRESTONS P

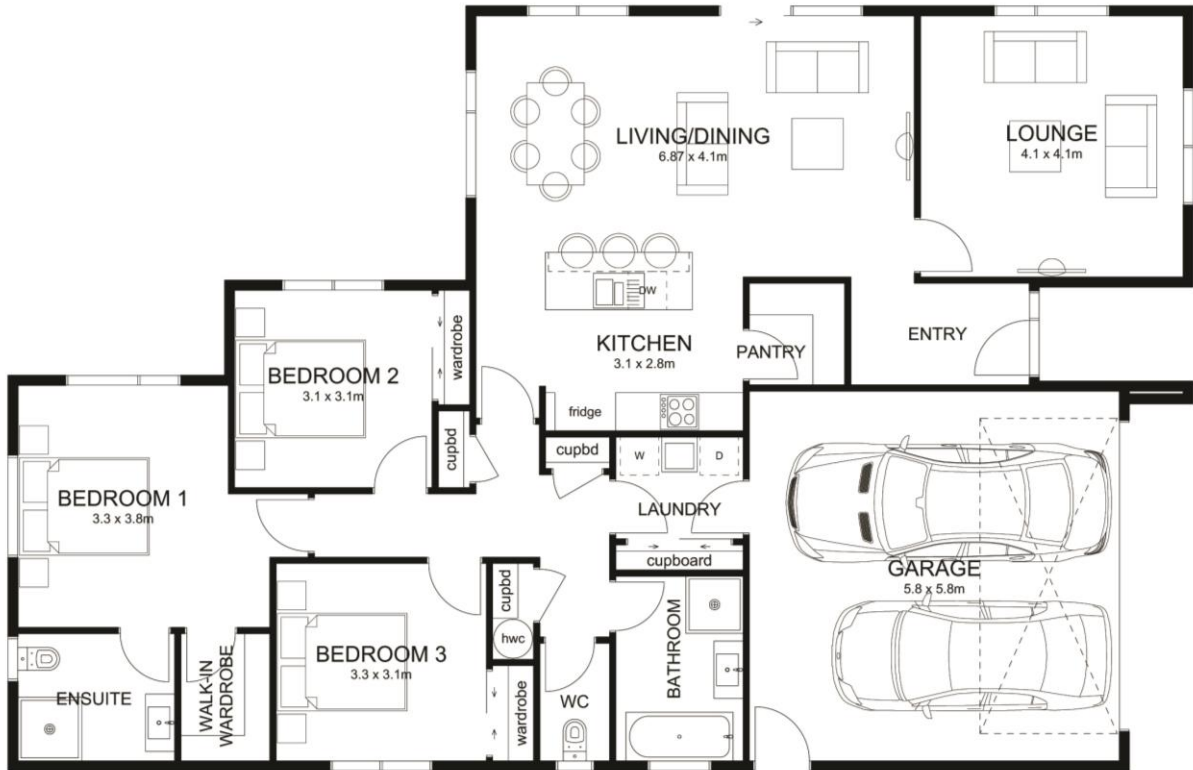
# Peter Ray Homes

HOUSE & LAND LINCOLN: \$ 598,000

MONTE CRESCENT, VERDECO PARK (Lot 94)



Turnkey from 5% Deposit



HOUSE SIZE: 180m<sup>2</sup>

SECTION SIZE: 562m<sup>2</sup>

## INCLUSIONS

- Peter Ray Homes specification
- 10 year Master Build Guarantee
- Appliance package
- Floor coverings
- Landscaping allowance for Driveway, Patio & Boundary fencing



Ph 03 348 1994

[www.peterrayhomes.co.nz](http://www.peterrayhomes.co.nz)

Office 521 Blenheim Road, Sockburn, Christchurch

SHOWHOMES AT FARINGDON ROLLESTON, TE WHARIKI LINCOLN & PRESTONS